



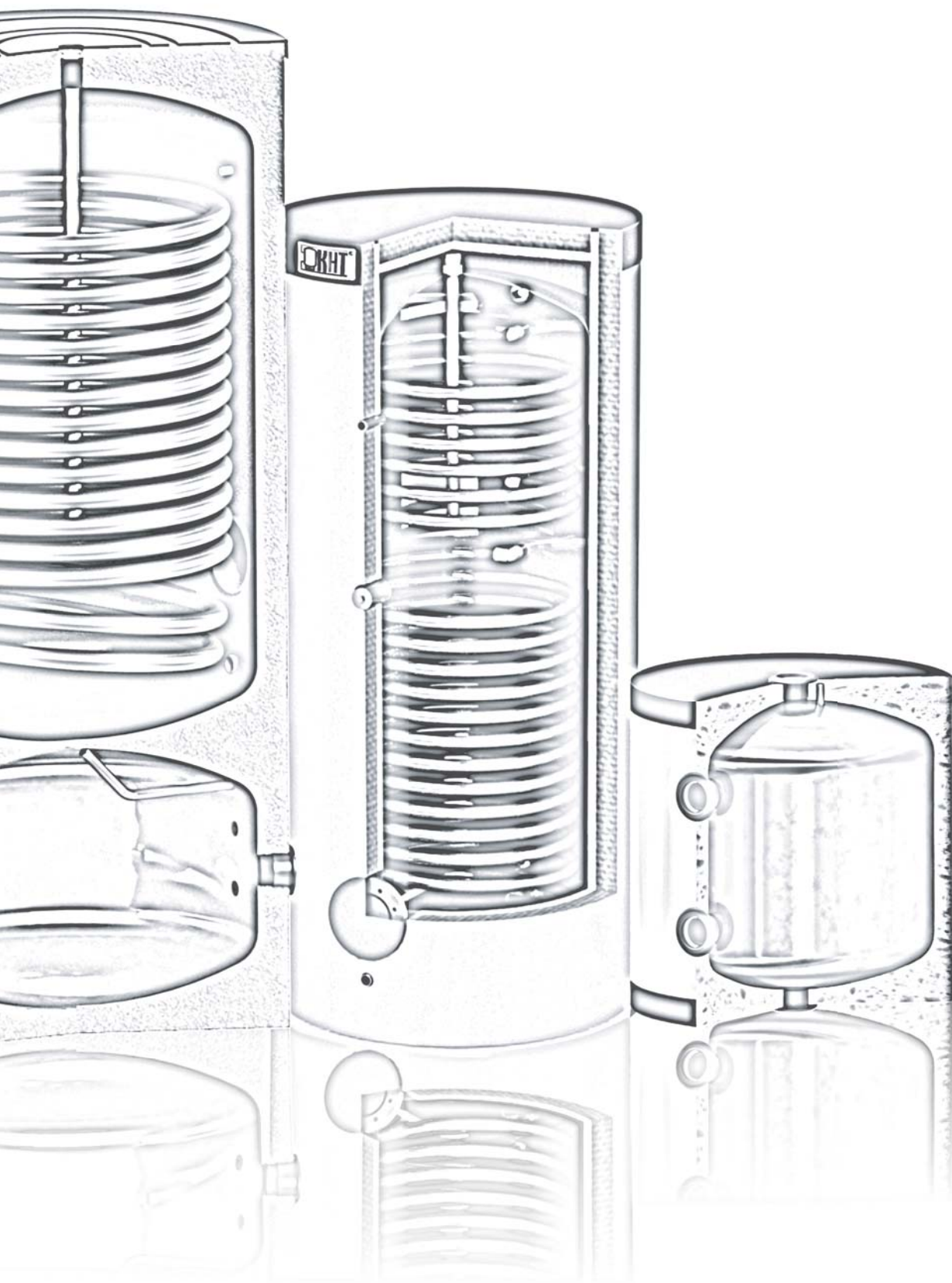
№ 01/ 01/ 25



2025

PRICE LIST

Efficient energy management



CONTENTS

Water heaters Premium KHT BT-B-00 200-500 WP-PU	2
Water heaters KHT BT-C-00 200-500 WP-PU	3
Water heaters KHT BT-C-00 750-2000 GP-PS	4
Water heaters BT-PV, BT-U, BT-S	5
Heat towers	5
Buffer tanks HPTH 30-150 l for heat pumps	6
Buffer tank Hygienic KHT HPTh-B-01-120-GP-PU for heat pumps	6
Buffer tanks with solid thermal insulation HP-B HYGIENIC 200 - 400 l	7
Buffer tanks in removable thermal insulation HP-C HYGIENIC	7
Buffer tanks PS 200 - 2000 l	9
Buffer tanks with removable thermal insulation PSI-C 200 - 2000 l	10
Buffer tanks with removable thermal insulation EAM-C 200 - 2000 l	10
Electric heating elements KHT	11
Heat exchangers of the block TB, TC, TU type	11
Safety groups	13
Floor heating	14
Installation equipment	19

SERIA Premium KHT BT-B-00 – Water heaters without heat exchangers

Model	Vendor code	Energy efficiency class	Surface of the heat exchanger, m ²		Diameter, mm	Height, mm	Price €
			Lower	Upper			
Premium KHT BT-B-00-200-WP-PU	<i>BTB000200WPPU</i>	B	–	–	500*	1390	999
Premium KHT BT-B-00-300-WP-PU	<i>BTB000300WPPU</i>	B	–	–	600*	1416	1175
Premium KHT BT-B-00-400-WP-PU	<i>BTB000400WPPU</i>	B	–	–	600*	1665	1315
Premium KHT BT-B-00-500-WP-PU	<i>BTB000500WPPU</i>	B	–	–	650*	1682	1441



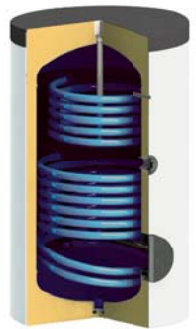
SERIA Premium KHT BT-B-01 – Water heaters with 1 heat exchanger

Model	Vendor code	Energy efficiency class	Surface of the heat exchanger, m ²		Diameter, mm	Height, mm	Price €
			Lower	Upper			
Premium KHT BT-B-01-200-WP-PU	<i>BTB010200WPPU</i>	B	1,14	–	500*	1390	1130
Premium KHT BT-B-01-300-WP-PU	<i>BTB010300WPPU</i>	B	1,8	–	600*	1416	1392
Premium KHT BT-B-01-400-WP-PU	<i>BTB010400WPPU</i>	B	2,0	–	600*	1665	1545
Premium KHT BT-B-01-500-WP-PU	<i>BTB010500WPPU</i>	B	2,4	–	650*	1682	1687



SERIA Premium KHT BT-B-11 – Water heaters with 2 heat exchangers

Model	Vendor code	Energy efficiency class	Surface of the heat exchanger, m ²		Diameter, mm	Height, mm	Price €
			Lower	Upper			
Premium KHT BT-B-11-200-WP-PU	<i>BTB110200WPPU</i>	B	1,14	0,6	500*	1390	1224
Premium KHT BT-B-11-300-WP-PU	<i>BTB110300WPPU</i>	B	1,8	0,6	600*	1416	1466
Premium KHT BT-B-11-400-WP-PU	<i>BTB110400WPPU</i>	B	2,0	1,2	600*	1665	1691
Premium KHT BT-B-11-500-WP-PU	<i>BTB110500WPPU</i>	B	2,4	1,2	650*	1682	1810



Water heater Premium KHT BTM-B-11-300-WP-PU for heat pumps with 2 exchangers

Model	Vendor code	Energy efficiency class	Surface of the heat exchanger, m ²		Diameter, mm	Height, mm	Price €
			Internal	Outer			
Premium KHT BTM-B-11-300-WP-PU	<i>BTMB11300WPPU</i>	B	1,14	4,0	600	1416	1871



SERIA Premium KHT BTM-B – Water heaters for heat pumps with 1 exchanger

Model	Vendor code	Energy efficiency class	Surface of the heat exchanger, m ²		Diameter, mm	Height, mm	Price €
			Internal	Outer			
Premium KHT BTm-B-200-WP-PU	<i>BTMB200WPPU</i>	B	–	2,4	500*	1390	1293
Premium KHT BTm-B-300-WP-PU	<i>BTMB200WPPU</i>	B	–	4,0	600*	1416	1521
Premium KHT BTm-B-400-WP-PU	<i>BTMB200WPPU</i>	B	–	5,15	600*	1665	1859
Premium KHT BTm-B-500-WP-PU	<i>BTMB200WPPU</i>	B	–	5,94	650*	1682	2074



* – diameter without insulation. Insulation thickness 120 mm

SERIA KHT BT-C-00 WP-PU – Water heaters without heat exchangers

Model	Vendor code	Energy efficiency class	Surface of the heat exchanger, m ²		Diameter, mm	Height, mm	Price €
			Lower	Upper			
KHT BT-C-00-200-WP-PU	<i>BTC000200WPPU</i>	C	–	–	500*	1166	862
KHT BT-C-00-300-WP-PU	<i>BTC000300WPPU</i>	C	–	–	600*	1196	1022
KHT BT-C-00-400-WP-PU	<i>BTC000400WPPU</i>	C	–	–	600*	1687	1287
KHT BT-C-00-500-WP-PU	<i>BTC000500WPPU</i>	C	–	–	650*	1679	1399



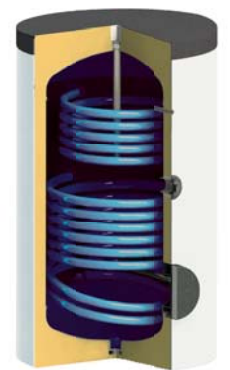
SERIA KHT BT-C-01 WP-PU – Water heaters with 1 heat exchanger

Model	Vendor code	Energy efficiency class	Surface of the heat exchanger, m ²		Diameter, mm	Height, mm	Price €
			Lower	Upper			
KHT BT-C-01-200-WP-PU	<i>BTC010200WPPU</i>	C	0,9	–	500*	1166	963
KHT BT-C-01-300-WP-PU	<i>BTC010300WPPU</i>	C	1,2	–	600*	1196	1174
KHT BT-C-01-400-WP-PU	<i>BTC010400WPPU</i>	C	1,6	–	600*	1687	1485
KHT BT-C-01-500-WP-PU	<i>BTC010500WPPU</i>	C	1,6	–	650*	1679	1591



SERIA KHT BT-C-11 WP-PU – Water heaters with 2 heat exchangers

Model	Vendor code	Energy efficiency class	Surface of the heat exchanger, m ²		Diameter, mm	Height, mm	Price €
			Lower	Upper			
KHT BT-C-11-200-WP-PU	<i>BTC110200WPPU</i>	C	0,9	0,6	500*	1166	1055
KHT BT-C-11-300-WP-PU	<i>BTC110300WPPU</i>	C	1,2	0,6	600*	1196	1266
KHT BT-C-11-400-WP-PU	<i>BTC110400WPPU</i>	C	1,6	1,2	600*	1687	1624
KHT BT-C-11-500-WP-PU	<i>BTC110500WPPU</i>	C	1,6	1,2	650*	1679	1734



SERIA KHT BTM-C WP-PU – Water heaters for heat pumps with 1 exchanger

Model	Vendor code	Energy efficiency class	Surface of the heat exchanger, m ²	Diameter, mm	Height, mm	Price €
KHT BTM-C-200-WP-PU	<i>BTMC200WPPU</i>	C	2,4	500*	1166	1128
KHT BTM-C-300-WP-PU	<i>BTMC300WPPU</i>	C	3,1	600*	1196	1316
KHT BTM-C-400-WP-PU	<i>BTMC400WPPU</i>	C	3,7	600*	1687	1704
KHT BTM-C-500-WP-PU	<i>BTMC500WPPU</i>	C	4,4	650*	1679	1846



* – diameter without insulation. Insulation thickness 90 mm

WATER HEATERS KHT BT-C-00 750-2000 GP-PS

SERIA KHT BT-C-00 GP-PS – Water heaters without heat exchangers with removable thermal insulation

Model	Vendor code	Energy efficiency class	Surface of the heat exchanger, m ²		Diameter, mm	Height, mm	Price €
			Lower	Upper			
KHT BT-C-00-750-GP-PS	<i>BTC000750GPPS</i>	C	–	–	750*	1972	2084
KHT BT-C-00-1000-GP-PS	<i>BTC0001000GPPS</i>	C	–	–	850*	1944	2374
KHT BT-C-00-1500-GP-PS	<i>BTC0001500GPPS</i>	C	–	–	1000*	2049	2969
KHT BT-C-00-2000-GP-PS	<i>BTC0002000GPPS</i>	C	–	–	1200*	2056	4192



SERIA KHT BT-C-01 GP-PS – Water heaters with 1 heat exchanger with removable thermal insulation

Model	Vendor code	Energy efficiency class	Surface of the heat exchanger, m ²		Diameter, mm	Height, mm	Price €
			Lower	Upper			
KHT BT-C-01-750-GP-PS	<i>BTC010750GPPS</i>	C	2,4	–	750*	1972	2357
KHT BT-C-01-1000-GP-PS	<i>BTC0101000GPPS</i>	C	4,7	–	850*	1944	2858
KHT BT-C-01-1500-GP-PS	<i>BTC0101500GPPS</i>	C	4,7	–	1000*	2049	3556
KHT BT-C-01-2000-GP-PS	<i>BTC0102000GPPS</i>	C	4,7	–	1200*	2056	4712



SERIA KHT BT-C-11 GP-PS – Water heaters with 2 heat exchangers with removable thermal insulation

Model	Vendor code	Energy efficiency class	Surface of the heat exchanger, m ²		Diameter, mm	Height, mm	Price €
			Lower	Upper			
KHT BT-C-11-750-GP-PS	<i>BTC110750GPPS</i>	C	3,0	1,2	750*	1972	2567
KHT BT-C-11-1000-GP-PS	<i>BTC1101000GPPS</i>	C	3,2	1,6	850*	1944	3113
KHT BT-C-11-1500-GP-PS	<i>BTC1101500GPPS</i>	C	3,2	1,6	1000*	2049	3463
KHT BT-C-11-2000-GP-PS	<i>BTC1102000GPPS</i>	C	4,7	1,6	1200*	2056	4427



SERIA KHT BTM-C GP-PS – Water heaters for heat pumps with removable thermal insulation

Model	Vendor code	Energy efficiency class	Surface of the heat exchanger, m ²	Diameter, mm	Height, mm	Price €
KHT BTM-C-750-GP-PS	<i>BTMC750GPPS</i>	C	6,3	750*	1909	2718
KHT BTM-C-1000-GP-PS	<i>BTMC1000GPPS</i>	C	7,9	850*	2042	3196



* – diameter without insulation. Insulation thickness 160 mm

WATER HEATERS BT-PV, BT-U, BT-S

Model	Vendor code	Energy efficiency class	Surface of the heat exchanger, m ²	Volume, l	Height/Diameter, mm	Price €
KHT BT-PV-B-00-120-WP-PU	<i>BTPVB000120WPPU</i>	B	–	120	1049/ 505	579
KHT BT-U-B-01-120-WP-PU	<i>BTUB010120WPPU</i>	B	1,2	126	1057/ 505	730
KHT BT-S-B-01-120-WP-PU	<i>BTSB010120WPPU</i>	B	1,0	126	1038/ 505	742



HEAT TOWERS

Heating towers THP series, enamelled

Model	Vendor code	Energy efficiency class	Surface of the heat exchanger, m ²	Volume, l	Height/Diameter, mm	Price €
KHT THP-B-205/75-GP-PU	<i>THP20575GPPU</i>	B	2,4	205/ 75	1699/ 550*	1809
KHT THP-B-290/105-GP-PU	<i>THP290105GPPU</i>	B	3,2	250/101	1684/ 601*	1969



Heating towers THPh series, hygienic

Model	Vendor code	Energy efficiency class	Surface of the heat exchanger, m ²	Volume, l	Height/Diameter, mm	Price €
KHT THPh-290/105-GP-PU	<i>THPh290105GPPU</i>	B	4,0	269/10	1692/ 603*	1792
KHT THPh-300/200-GP-PU	<i>THPh300200GPPU</i>	B	4,0	408	1700/ 603*	1617



* – diameter without insulation. Insulation thickness+120 mm

BUFFER TANKS HPTH 30-150 | FOR HEAT PUMPS

HPTH-B – Wall-mounted buffer tanks for heat pumps

Model	Vendor code	Energy efficiency class	Operating pressure, bar	Diameter/Height, mm	Price €
KHT HPTH-B-30-WP-PU	<i>HPTHB30WPPU</i>	B	3	370/ 550	138
KHT HPTH-B-60-WP-PU	<i>HPTHB60WPPU</i>	B	3	500/ 530	293
KHT HPTH-B-100-WP-PU	<i>HPTHB100WPPU</i>	B	3	570/ 577	365
KHT HPTH-B-120-WP-PU	<i>HPTHB120WPPU</i>	B	3	570/ 690	383
KHT HPTH-B-150-WP-PU	<i>HPTHB150WPPU</i>	B	3	570/ 893	472



HPTH-3-B – Wall-mounted buffer tanks for heat pumps

Model	Vendor code	Energy efficiency class	Operating pressure, bar	Diameter/Height, mm	Price €
KHT HPTH-3-B-60-WP-PU	<i>HPTH3B60WPPU</i>	B	3	505/ 609	304



HPTH-3-B – Stationary-suspended buffer tanks for heat pump

Model	Vendor code	Energy efficiency class	Operating pressure, bar	Diameter/Height, mm	Price €
KHT HPTH-3-B-100-WP-PU	<i>HPTH3B100WPPU</i>	B	3	505/ 868	407
KHT HPTH-3-B-120-WP-PU	<i>HPTH3B120WPPU</i>	B	3	505/ 1006	421
KHT HPTH-3-B-150-WP-PU	<i>HPTH3B150WPPU</i>	B	3	594/ 990	489



BUFFER TANK HYGIENIC KHT HPTH-B-01-120-GP-PU FOR HEAT PUMPS

Model	Vendor code	Energy efficiency class	Operating pressure, bar	Surface of the heat exchanger, m ²	Diameter/Height, mm	Price €
KHT HPTH-B-01-120-GP-PU	<i>HPTHb010120GPPU</i>	B	3	3,0	505/ 970	811



BUFFER TANKS WITH SOLID THERMAL INSULATION HP-B HYGIENIC 200 - 400 l

SERIA HPh-B-10-PU – Buffer tanks with exchanger made of stainless steel AISI 316L

Model	Vendor code	Energy efficiency class	Surface of the heat exchanger, m ²			Price €
			CWU(S)	Lower (S)	HP (S)	
KHT HPh-B-10-200-GP-PU	<i>HPhB100200GPPU</i>	B	3,5	–	–	1176
KHT HPh-B-10-300-GP-PU	<i>HPhB100300GPPU</i>	B	3,5	–	–	1350
KHT HPh-B-10-400-GP-PU	<i>HPhB100400GPPU</i>	B	4,0	–	–	1490



SERIA HPh-B-11 PU – Buffer tanks with exchanger made of stainless steel AISI 316L and carbon steel lower exchanger

Model	Vendor code	Energy efficiency class	Surface of the heat exchanger, m ²			Price €
			CWU(S)	Lower (S)	HP (S)	
KHT HPh-B-11-200-GP-PU	<i>HPhB110200GPPU</i>	B	3,5	1,2	–	1289
KHT HPh-B-11-300-GP-PU	<i>HPhB110300GPPU</i>	B	3,5	1,2	–	1467
KHT HPh-B-11-400-GP-PU	<i>HPhB110400GPPU</i>	B	4,0	1,8	–	1648



BUFFER TANKS IN REMOVABLE THERMAL INSULATION HP-C HYGIENIC

SERIA HPh-C-10 PS – Buffer tanks with exchanger made of stainless steel AISI316L with removable thermal insulation

Model	Vendor code	Energy efficiency class	Surface of the heat exchanger, m ²			Price €
			CWU(S)	Lower (S)	HP (S)	
KHT HPh-C-10-200-GP-PS	<i>HPhC100200GPPS</i>	C	3,5	–	–	1121
KHT HPh-C-10-300-GP-PS	<i>HPhC100300GPPS</i>	C	3,5	–	–	1220
KHT HPh-C-10-400-GP-PS	<i>HPhC100400GPPS</i>	C	4,0	–	–	1357
KHT HPh-C-10-500-GP-PS	<i>HPhC100500GPPS</i>	C	5,0	–	–	1597
KHT HPh-C-10-800-GP-PS	<i>HPhC100800GPPS</i>	C	6,0	–	–	2047
KHT HPh-C-10-1000-GP-PS	<i>HPhC101000GPPS</i>	C	7,8	–	–	2377
KHT HPh-C-10-1500-GP-PS	<i>HPhC101500GPPS</i>	C	8,0	–	–	3252
KHT HPh-C-10-2000-GP-PS	<i>HPhC102000GPPS</i>	C	8,0	–	–	3726



SERIA HPh-C-11 PS – Buffer tanks with heat exchanger made of stainless steel AISI 316L and carbon steel lower heat exchanger with removable thermal insulation

Model	Vendor code	Energy efficiency class	Surface of the heat exchanger, m ²			Price €
			CWU(S)	Lower (S)	HP (S)	
KHT HPh-C-11-200-GP-PS	<i>HPhC110200GPPS</i>	C	3,5	1,2	–	1238
KHT HPh-C-11-300-GP-PS	<i>HPhC110300GPPS</i>	C	3,5	1,2	–	1340
KHT HPh-C-11-400-GP-PS	<i>HPhC110400GPPS</i>	C	4,0	1,8	–	1497
KHT HPh-C-11-500-GP-PS	<i>HPhC110500GPPS</i>	C	5,0	1,8	–	1751
KHT HPh-C-11-800-GP-PS	<i>HPhC110800GPPS</i>	C	6,0	3,2	–	2264
KHT HPh-C-11-1000-GP-PS	<i>HPhC111000GPPS</i>	C	7,8	3,2	–	2647
KHT HPh-C-11-1500-GP-PS	<i>HPhC111500GPPS</i>	C	8,0	4,7	–	3297
KHT HPh-C-11-2000-GP-PS	<i>HPhC112000GPPS</i>	C	8,0	4,7	–	3869



SERIA HPh-C-12 PS – Buffer tanks with exchanger made of stainless steel AISI 316L and carbon steel lower and upper heat exchangers in removable insulation

Model	Vendor code	Energy efficiency class	Surface of the heat exchanger, m ²			Price €
			CWU(S)	Lower (S)	Upper (S)	
KHT HPh-C-12-500-GP-PS	<i>HPhC120500GPPS</i>	C	5,0	1,8	1,2	1934
KHT HPh-C-12-800-GP-PS	<i>HPhC120800GPPS</i>	C	6,0	3,2	2,4	2479
KHT HPh-C-12-1000-GP-PS	<i>HPhC121000GPPS</i>	C	7,8	3,2	2,4	2997
KHT HPh-C-12-1500-GP-PS	<i>HPhC121500GPPS</i>	C	8,0	4,7	3,2	3551
KHT HPh-C-12-2000-GP-PS	<i>HPhC122000GPPS</i>	C	8,0	4,7	3,2	4435



SERIA HPh-C-20 PS – Buffer tanks with double exchanger made of AISI 316L stainless steel in removable insulation

Model	Vendor code	Energy efficiency class	Surface of the heat exchanger, m ²			Price €
			CWU(S)	Lower (S)	HP (S)	
KHT HPh-C-20-500-GP-PS	<i>HPhC200500GPPS</i>	C	5,0	–	5,0	2115
KHT HPh-C-20-800-GP-PS	<i>HPhC200800GPPS</i>	C	6,0	–	6,0	2776
KHT HPh-C-20-1000-GP-PS	<i>HPhC201000GPPS</i>	C	7,8	–	7,8	3315
KHT HPh-C-20-1500-GP-PS	<i>HPhC201500GPPS</i>	C	8,0	–	8,0	3959
KHT HPh-C-20-2000-GP-PS	<i>HPhC202000GPPS</i>	C	8,0	–	8,0	4434



SERIA PS-B-00 PU – Storage tanks without heat exchangers

Model	Vendor code	Energy efficiency class	Surface of the heat exchanger, m ²		Price €
			Lower	Upper	
KHT PS-B-00-200-GP-PU	<i>PSB000200GPPU</i>	B	–	–	705
KHT PS-B-00-300-GP-PU	<i>PSB000300GPPU</i>	B	–	–	860
KHT PS-B-00-400-GP-PU	<i>PSB000400GPPU</i>	B	–	–	856



SERIA PS-C-00 PS – Buffer tanks without heat exchangers in removable insulation

Model	Vendor code	Energy efficiency class	Surface of the heat exchanger, m ²		Price €
			Lower	Upper	
KHT PS-C-00-200-GP-PS	<i>PSC000200GPPS</i>	C	–	–	651
KHT PS-C-00-300-GP-PS	<i>PSC000300GPPS</i>	C	–	–	753
KHT PS-C-00-400-GP-PS	<i>PSC000400GPPS</i>	C	–	–	793
KHT PS-C-00-500-GP-PS	<i>PSC000500GPPS</i>	C	–	–	987
KHT PS-C-00-800-GP-PS	<i>PSC000800GPPS</i>	C	–	–	1140
KHT PS-C-00-1000-GP-PS	<i>PSC001000GPPS</i>	C	–	–	1241
KHT PS-C-00-1500-GP-PS	<i>PSC001500GPPS</i>	C	–	–	1861
KHT PS-C-00-2000-GP-PS	<i>PSC002000GPPS</i>	C	–	–	2382



SERIA PS-C-01 PS – Buffer tanks with 1 heat exchanger in removable insulation

Model	Vendor code	Energy efficiency class	Surface of the heat exchanger, m ²		Price €
			Lower	Upper	
KHT PS-C-01-200-GP-PS	<i>PSC010200GPPS</i>	C	1,2	–	771
KHT PS-C-01-300-GP-PS	<i>PSC010300GPPS</i>	C	1,2	–	869
KHT PS-C-01-400-GP-PS	<i>PSC010400GPPS</i>	C	1,8	–	989
KHT PS-C-01-500-GP-PS	<i>PSC010500GPPS</i>	C	1,8	–	1141
KHT PS-C-01-800-GP-PS	<i>PSC010800GPPS</i>	C	3,2	–	1469
KHT PS-C-01-1000-GP-PS	<i>PSC011000GPPS</i>	C	3,2	–	1589
KHT PS-C-01-1500-GP-PS	<i>PSC011500GPPS</i>	C	4,7	–	2196
KHT PS-C-01-2000-GP-PS	<i>PSC012000GPPS</i>	C	4,7	–	2889



SERIA PS-C-02 PS – Buffer tanks with 2 heat exchangers in removable insulation

Model	Vendor code	Energy efficiency class	Surface of the heat exchanger, m ²		Price €
			Lower	Upper	
KHT PS-C-02-500-GP-PS	<i>PSC020500GPPS</i>	C	1,8	1,2	1327
KHT PS-C-02-800-GP-PS	<i>PSC020800GPPS</i>	C	3,2	2,4	1714
KHT PS-C-02-1000-GP-PS	<i>PSC0201000GPPS</i>	C	3,2	2,4	1887
KHT PS-C-02-1500-GP-PS	<i>PSC0201500GPPS</i>	C	4,7	3,2	2460
KHT PS-C-02-2000-GP-PS	<i>PSC0202000GPPS</i>	C	4,7	3,2	3175



BUFFER TANKS WITH REMOVABLE THERMAL INSULATION PSI-C 200 - 2000 I

SERIA PSI-C-10 – Buffer tanks with upper heat exchanger made of stainless steel AISI 316L

Model	Vendor code	Energy efficiency class	Surface of the heat exchanger, m ²		Price €
			Lower (S)	Upper (S)	
KHT PSI-C-10-200-GP-PS	<i>PSIC100200GPPS</i>	C	–	2,0	951
KHT PSI-C-10-300-GP-PS	<i>PSIC100300GPPS</i>	C	–	2,0	1059
KHT PSI-C-10-400-GP-PS	<i>PSIC100400GPPS</i>	C	–	2,0	1134
KHT PSI-C-10-500-GP-PS	<i>PSIC100500GPPS</i>	C	–	2,0	1276
KHT PSI-C-10-800-GP-PS	<i>PSIC100800GPPS</i>	C	–	2,0	1527
KHT PSI-C-10-1000-GP-PS	<i>PSIC1001000GPPS</i>	C	–	2,0	1634
KHT PSI-C-10-1500-GP-PS	<i>PSIC1001500GPPS</i>	C	–	2,0	2135
KHT PSI-C-10-2000-GP-PS	<i>PSIC1002000GPPS</i>	C	–	2,0	2715



SERIA PSI-C-11 – Buffer tanks with upper heat exchanger made of AISI 316L stainless steel and carbon steel lower heat exchanger

Model	Vendor code	Energy efficiency class	Surface of the heat exchanger, m ²		Price €
			Lower (S)	Upper (S)	
KHT PSI-C-11-200-GP-PS	<i>PSIC110200GPPS</i>	C	1,2	2,0	1069
KHT PSI-C-11-300-GP-PS	<i>PSIC110300GPPS</i>	C	1,2	2,0	1165
KHT PSI-C-11-400-GP-PS	<i>PSIC110400GPPS</i>	C	1,8	2,0	1285
KHT PSI-C-11-500-GP-PS	<i>PSIC110500GPPS</i>	C	1,8	2,0	1511
KHT PSI-C-11-800-GP-PS	<i>PSIC110800GPPS</i>	C	3,2	2,0	1865
KHT PSI-C-11-1000-GP-PS	<i>PSIC1101000GPPS</i>	C	3,2	2,0	1989
KHT PSI-C-11-1500-GP-PS	<i>PSIC1101500GPPS</i>	C	4,7	2,0	2490
KHT PSI-C-11-2000-GP-PS	<i>PSIC1102000GPPS</i>	C	4,7	2,0	3222



BUFFER TANKS WITH REMOVABLE THERMAL INSULATION EAM-C 200 - 2000 I

Model	Vendor code	Energy efficiency class	Price €
KHT EAM-C-00-200-GP-PS	<i>EAMC000200GPPS</i>	C	589
KHT EAM-C-00-300-GP-PS	<i>EAMC000300GPPS</i>	C	700
KHT EAM-C-00-400-GP-PS	<i>EAMC000400GPPS</i>	C	781
KHT EAM-C-00-500-GP-PS	<i>EAMC000500GPPS</i>	C	835
KHT EAM-C-00-750-GP-PS	<i>EAMC000750GPPS</i>	C	1136
KHT EAM-C-00-1000-GP-PS	<i>EAMC001000GPPS</i>	C	1318
KHT EAM-C-00-1500-GP-PS	<i>EAMC001500GPPS</i>	C	1779
KHT EAM-C-00-2000-GP-PS	<i>EAMC002000GPPS</i>	C	2285



Electric heaters with thermostat KHT RS

Model	Vendor code	Power, kW	Voltage, V	Price €
KHT RS 1,8 kW 230V 6/4"	W180064	1,8	230	59
KHT RS 2,0 kW 230V 5/4"	W200054	2,0	230	59
KHT RS 2,0 kW 230V 6/4"	W200064	2,0	230	59
KHT RS 3,0 kW 230V 5/4"	W300054	3,0	230	63
KHT RS 3,0 kW 230V 6/4"	W300064	3,0	230	63



Electric heaters with thermostat KHT BNR

Model	Vendor code	Power, kW	Voltage, V	Price €
KHT BNR 4,5 kW 400V 6/4"	W450064	4,5	400	184
KHT BNR 6,0 kW 400V 6/4"	W600064	6,0	400	190
KHT BNR 9,0 kW 400V 6/4"	W900064	9,0	400	197
KHT BNR 12,0 kW 400V 6/4"	W1200064	12,0	400	204



Electric heaters without thermostat KHT BE

Model	Vendor code	Power, kW	Voltage, V	Price €
KHT BE 6 kW 230V 6/4"	BEW600064	6,0	230	60
KHT BE 9 kW 400V 6/4"	BEW900064	9,0	400	67



KHT heater housing

Model	Vendor code	Price €
KHT OGI 50 heater housing	OGIW50	50



HEAT EXCHANGERS OF THE BLOCK TB, TC, TU TYPE

Heat exchangers of the block TB type

Model	Vendor code	Length, mm	Heat transfer area, m ²	Price €
TB 600/25	TB600/25	600	1,25	378
TB 600/32	TB600/32	600	1,84	443



Heat exchangers of the block TC type

Model	Vendor code	Length, mm	Heat transfer area, m ²	Price €
TC-8,5	TC-8,5	865	1,17	221



Heat exchangers of the block TU2 type

Model	Vendor code	Length, mm	Heat transfer area, m ²	Price €
TU2- 1,8	TU2- 1,8	620	1,75	597
TU2- 2,1	TU2- 2,1	720	2,05	658
TU2- 2,5	TU2- 2,5	850	2,54	735
TU2- 2,9	TU2- 2,9	990	2,87	816
TU2- 3,4	TU2- 3,4	1150	3,36	915
TU2- 4,0	TU2- 4,0	1350	4,01	1034
TU2- 4,7	TU2- 4,7	1580	4,67	1174



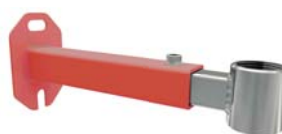
Heat exchangers of the block TU4 type

Model	Vendor code	Length, mm	Heat transfer area, m ²	Price €
TU4- 3,6	TU4- 3,6	600	3,64	1118
TU4- 4,3	TU4- 4,3	700	4,28	1251
TU4- 5,4	TU4- 5,4	850	5,35	1473
TU4- 6,1	TU4- 6,1	950	6,06	1613
TU4- 7,1	TU4- 7,1	1090	7,13	1814
TU4- 8,6	TU4- 8,6	1300	8,56	2110
TU4- 10,0	TU4- 10,0	1500	9,98	2388
TU4-10,5	TU4-10,5	1560	10,5	2517



SAFETY GROUPS

Vendor code	Nomenclature	Price €
HWR-CCC3	Complete safety group (red) HWR-CCC (3 bar) L-245	36
HWR-CCC6	Complete safety group (red) HWR-CCC (6 bar) L-245	36
HWB-CCC3	Complete safety group (blue) HWB-CCC (3 bar) L-245	36
HWB-CCC6	Complete safety group (blue) HWB-CCC (6 bar) L-245	36
HWN-CCC3	Complete stainless steel safety group HWN-CCC (3 bar) L-250	42
HWN-CCC6	Complete stainless steel safety group HWN-CCC (6 bar) L-250	42
BSGSr	Steel beam of the safety group without configuration (red) BSGSr L-245	13
BSGSb	Steel beam of the safety group without configuration (blue) BSGSb L-245	13
BSGSn	Stainless steel beam of the safety group without configuration BSGSn L-250	20
KRPR	Telescopic mounting of the expansion vessel (red) KRPR	9
KRPW	Telescopic mounting of the expansion vessel (white) KRPW	9
KRPRS	Reinforced telescopic mounting of the expansion vessel (red) KRPRS	10
KRPWS	Reinforced telescopic mounting of the expansion vessel (white) KRPWS	10
KKEVC3/4x3/4	Connector with valve EVC 3/4x3/4	10



Internal cupboards

Vendor code	Nomenclature	Price €
<i>KHT-P-00</i>	Int. Cupboard KHT-P-00 (360*580*110)	47
<i>KHT-P-01</i>	Int. Cupboard KHT-P-01 (480*580*110)	52
<i>KHT-P-02</i>	Int. Cupboard KHT-P-02 (610*580*110)	60
<i>KHT-P-03</i>	Int. Cupboard KHT-P-03 (760*580*110)	70
<i>KHT-P-04</i>	Int. Cupboard KHT-P-04 (840*580*110)	78
<i>KHT-P-05</i>	Int. Cupboard KHT-P-05 (1010*580*110)	91
<i>KHT-P-06</i>	Int. Cupboard KHT-P-06 (1250*580*110)	98



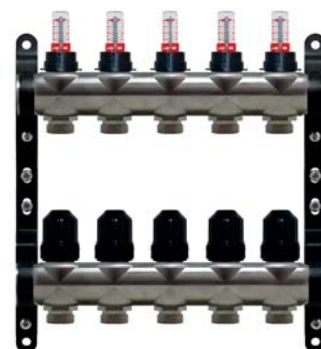
Outer cupboards

Vendor code	Nomenclature	Price €
<i>KHT-NE-00</i>	Out. Cupboard KHT-NE-00 (360*580*120)	47
<i>KHT-NE-01</i>	Out. Cupboard KHT-NE-01 (420*580*120)	56
<i>KHT-NE-02</i>	Out. Cupboard KHT-NE-02 (550*580*120)	63
<i>KHT-NE-03</i>	Out. Cupboard KHT-NE-03 (700*580*120)	75
<i>KHT-NE-04</i>	Out. Cupboard KHT-NE-04 (780*580*120)	81
<i>KHT-NE-05</i>	Out. Cupboard KHT-NE-05 (950*580*120)	84
<i>KHT-NE-06</i>	Out. Cupboard KHT-NE-06 (1150*580*120)	89



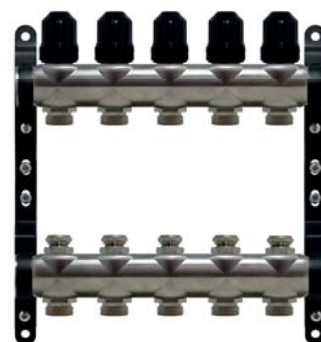
Manifolds Inox KHT with flow meters

Vendor code	Nomenclature	Price €
<i>RI-VT-02</i>	Manifold Inox KHT with flow meters 2 outlets RI-VT-02	44
<i>RI-VT-03</i>	Manifold Inox KHT with flow meters 3 outlets RI-VT-03	57
<i>RI-VT-04</i>	Manifold Inox KHT with flow meters 4 outlets RI-VT-04	70
<i>RI-VT-05</i>	Manifold Inox KHT with flow meters 5 outlets RI-VT-05	83
<i>RI-VT-06</i>	Manifold Inox KHT with flow meters 6 outlets RI-VT-06	97
<i>RI-VT-07</i>	Manifold Inox KHT with flow meters 7 outlets RI-VT-07	110
<i>RI-VT-08</i>	Manifold Inox KHT with flow meters 8 outlets RI-VT-08	123
<i>RI-VT-09</i>	Manifold Inox KHT with flow meters 9 outlets RI-VT-09	137
<i>RI-VT-10</i>	Manifold Inox KHT with flow meters 10 outlets RI-VT-10	152
<i>RI-VT-11</i>	Manifold Inox KHT with flow meters 11 outlets RI-VT-11	165
<i>RI-VT-12</i>	Manifold Inox KHT with flow meters 12 outlets RI-VT-12	177
<i>RI-VT-13</i>	Manifold Inox KHT with flow meters 13 outlets RI-VT-13	198



Manifolds Inox KHT balancing

<i>RI-BT-02</i>	Manifold Inox KHT balancing 2 outlets RI-BT-02	44
<i>RI-BT-03</i>	Manifold Inox KHT balancing 3 outlets RI-BT-03	57
<i>RI-BT-04</i>	Manifold Inox KHT balancing 4 outlets RI-BT-04	70
<i>RI-BT-05</i>	Manifold Inox KHT balancing 5 outlets RI-BT-05	83
<i>RI-BT-06</i>	Manifold Inox KHT balancing 6 outlets RI-BT-06	97
<i>RI-BT-07</i>	Manifold Inox KHT balancing 7 outlets RI-BT-07	110
<i>RI-BT-08</i>	Manifold Inox KHT balancing 8 outlets RI-BT-08	123
<i>RI-BT-09</i>	Manifold Inox KHT balancing 9 outlets RI-BT-09	137
<i>RI-BT-10</i>	Manifold Inox KHT balancing 10 outlets RI-BT-10	152
<i>RI-BT-11</i>	Manifold Inox KHT balancing 11 outlets RI-BT-11	165
<i>RI-BT-12</i>	Manifold Inox KHT balancing 12 outlets RI-BT-12	177
<i>RI-BT-13</i>	Manifold Inox KHT balancing 13 outlets RI-BT-13	198



Manifolds Inox KHT without set

<i>RI-2-02</i>	Manifold Inox KHT without set RI-2-02	23
<i>RI-2-03</i>	Manifold Inox KHT without set RI-2-03	26
<i>RI-2-04</i>	Manifold Inox KHT without set RI-2-04	30
<i>RI-2-05</i>	Manifold Inox KHT without set RI-2-05	33
<i>RI-2-06</i>	Manifold Inox KHT without set RI-2-06	38
<i>RI-2-07</i>	Manifold Inox KHT without set RI-2-07	41
<i>RI-2-08</i>	Manifold Inox KHT without set RI-2-08	46
<i>RI-2-09</i>	Manifold Inox KHT without set RI-2-09	49
<i>RI-2-10</i>	Manifold Inox KHT without set RI-2-10	52
<i>RI-2-11</i>	Manifold Inox KHT without set RI-2-11	55
<i>RI-2-12</i>	Manifold Inox KHT without set RI-2-12	60
<i>RI-2-13</i>	Manifold Inox KHT without set RI-2-13	63



Components for Inox manifolds

Vendor code	Nomenclature	Price €
GP-I-B	Pump group Inox KHT without set GP-I-B	60
GP-N-B	Pump group Nickel KHT without set	52
EC-N-16	Eurocone Nickel KHT 3/4 x16 EC-N-16	3
DN-KTP	Drain group Nickel KHT DN-KTP	13
KP-I-B	Connector Inox KHT KP-I-B	57
VAK-N-1P-B	Faucet american Nickel KHT 1' corner with gasket + thermometer blue VAK-N-1P-B	17
VAK-N-1P-R	Faucet american Nickel KHT 1' corner with gasket + thermometer red VAK-N-1P-R	17
VAP-N-1P-B	Faucet american Nickel KHT 1' straight with gasket + thermometer blue VAP-N-1P-B	17
VAP-N-1P-R	Faucet american Nickel KHT 1' straight with gasket + thermometer red VAP-N-1P-R	17



Manifolds Brass KHT with flow meters

Vendor code	Nomenclature	Price €
<i>RB-VT-02</i>	Manifold Brass KHT with flow meters 2 outlets RB-VT-02	52
<i>RB-VT-03</i>	Manifold Brass KHT with flow meters 3 outlets RB-VT-03	71
<i>RB-VT-04</i>	Manifold Brass KHT with flow meters 4 outlets RB-VT-04	91
<i>RB-VT-05</i>	Manifold Brass KHT with flow meters 5 outlets RB-VT-05	113
<i>RB-VT-06</i>	Manifold Brass KHT with flow meters 6 outlets RB-VT-06	136
<i>RB-VT-07</i>	Manifold Brass KHT with flow meters 7 outlets RB-VT-07	155
<i>RB-VT-08</i>	Manifold Brass KHT with flow meters 8 outlets RB-VT-08	173
<i>RB-VT-09</i>	Manifold Brass KHT with flow meters 9 outlets RB-VT-09	194
<i>RB-VT-10</i>	Manifold Brass KHT with flow meters 10 outlets RB-VT-10	213
<i>RB-VT-11</i>	Manifold Brass KHT with flow meters 11 outlets RB-VT-11	234
<i>RB-VT-12</i>	Manifold Brass KHT with flow meters 12 outlets RB-VT-12	255
<i>RB-VT-13</i>	Manifold Brass KHT with flow meters 13 outlets RB-VT-13	277



Manifolds Brass KHT balancing

<i>RB-BT-02</i>	Manifold Brass KHT balancing 2 outlets RB-BT-02	52
<i>RB-BT-03</i>	Manifold Brass KHT balancing 3 outlets RB-BT-03	71
<i>RB-BT-04</i>	Manifold Brass KHT balancing 4 outlets RB-BT-04	91
<i>RB-BT-05</i>	Manifold Brass KHT balancing 5 outlets RB-BT-05	113
<i>RB-BT-06</i>	Manifold Brass KHT balancing 6 outlets RB-BT-06	136
<i>RB-BT-07</i>	Manifold Brass KHT balancing 7 outlets RB-BT-07	155
<i>RB-BT-08</i>	Manifold Brass KHT balancing 8 outlets RB-BT-08	173
<i>RB-BT-09</i>	Manifold Brass KHT balancing 9 outlets RB-BT-09	194
<i>RB-BT-10</i>	Manifold Brass KHT balancing 10 outlets RB-BT-10	213
<i>RB-BT-11</i>	Manifold Brass KHT balancing 11 outlets RB-BT-11	234
<i>RB-BT-12</i>	Manifold Brass KHT balancing 12 outlets RB-BT-12	255
<i>RB-BT-13</i>	Manifold Brass KHT balancing 13 outlets RB-BT-13	277



Manifolds Brass KHT without set

<i>RB-2-02</i>	Manifold Brass KHT without set RB-2-02	31
<i>RB-2-03</i>	Manifold Brass KHT without set RB-2-03	39
<i>RB-2-04</i>	Manifold Brass KHT without set RB-2-04	47
<i>RB-2-05</i>	Manifold Brass KHT without set RB-2-05	59
<i>RB-2-06</i>	Manifold Brass KHT without set RB-2-06	70
<i>RB-2-07</i>	Manifold Brass KHT without set RB-2-07	79
<i>RB-2-08</i>	Manifold Brass KHT without set RB-2-08	86
<i>RB-2-09</i>	Manifold Brass KHT without set RB-2-09	95
<i>RB-2-10</i>	Manifold Brass KHT without set RB-2-10	105
<i>RB-2-11</i>	Manifold Brass KHT without set RB-2-11	113
<i>RB-2-12</i>	Manifold Brass KHT without set RB-2-12	123
<i>RB-2-13</i>	Manifold Brass KHT without set RB-2-13	134



Components for Brass manifolds

Vendor code	Nomenclature	Price €
GP-B-B	Pump group Brass KHT without set GP-B-B	49
EC-B-16	Eurocone Brass KHT 3/4 x16 EC-B-16	3
DB-KTP	Drain group Brass KHT DB-KTP	12
KP-B-B	Connector Brass KHT KP-B-B	62
VAK-B-1P-B	Faucet american Brass KHT 1' corner with gasket + thermometer blue VAK-B-1P-B	17
VAK-B-1P-R	Faucet american Brass KHT 1' corner with gasket + thermometer red VAK-B-1P-R	17
VAP-B-1P-B	Faucet american Brass KHT 1' straight with gasket + thermometer blue VAP-B-1P-B	15
VAP-B-1P-R	Faucet american Brass KHT 1' straight with gasket + thermometer red VAP-B-1P-R	15



INSTALLATION EQUIPMENT

Vendor code	Nomenclature	Price €
RZ	Tacker KHT RZ	102
F-6969465	Taker clips 50 mm, black (300 pcs)	7
F-698759	Taker clips 45 mm, black (300 pcs)	6
PD-200	Pipe decoiler KHT PD-200	170
PD-300	Pipe decoiler KHT PD-300	242



Vendor code	Nomenclature	Price €
PD-500	Pipe decoiler KHT PD-500	197
PD-600	Pipe decoiler KHT PD-600	164
PD-700	Pipe decoilerKHT PD-700	476
PD-800	Pipe decoilerKHT PD-800	288
PD-900	Pipe decoiler KHT PD-900	297



Vendor code	Nomenclature	Price €
PD-1000	Pipe decoiler KHT PD-1000	153
PD-1100	Pipe decoiler KHT PD-1100	149
PD-1200	Pipe decoiler KHT PD-1200	162
PD-1300	Pipe decoiler PE KHT PD-1300	266





81480, Ukraine, Chukva, Vyrobnycha, 7 str.



info@kht.com.ua



kht.com.ua



+38-097-200-22-33